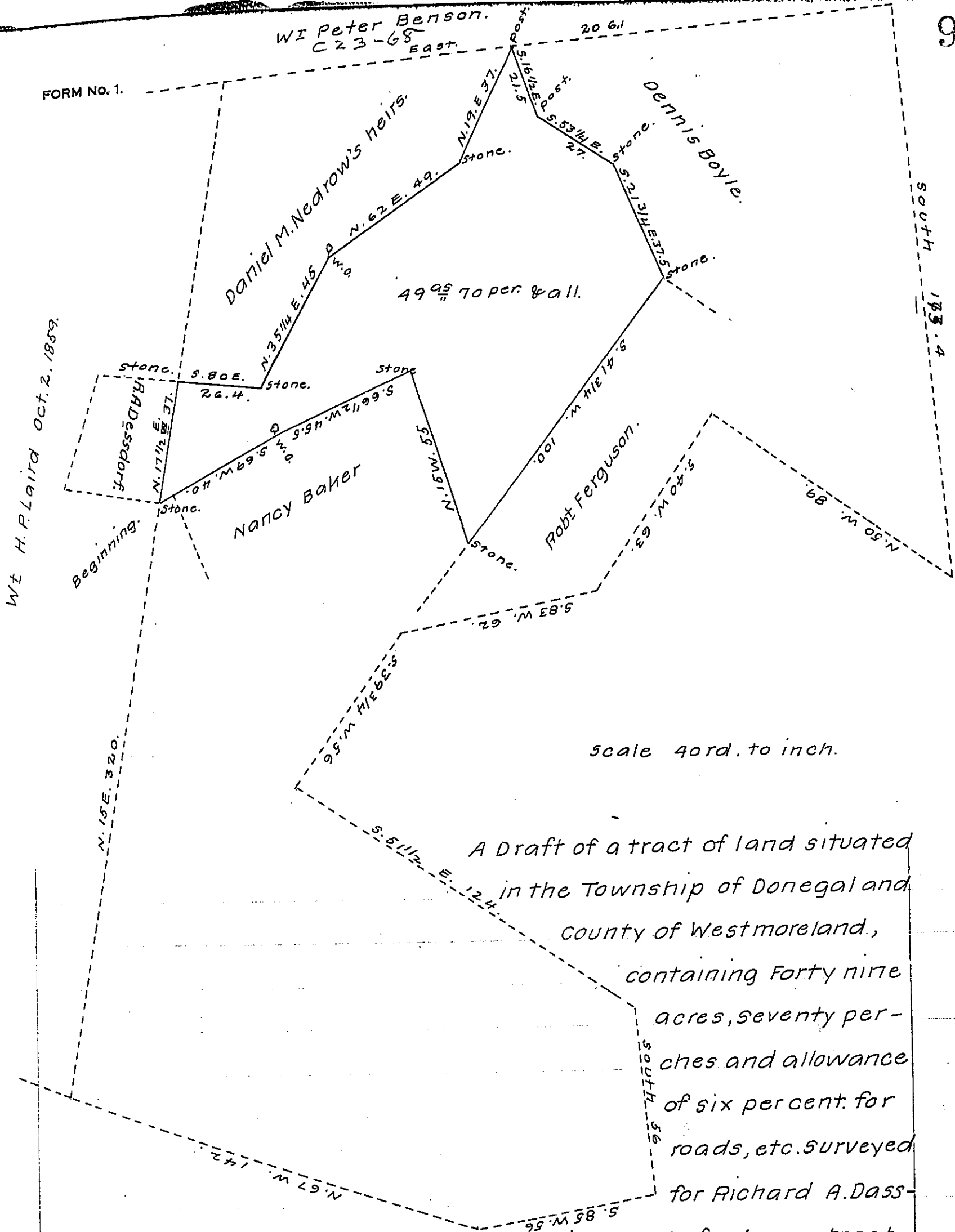


FORM No. 1.



scale 40rd. to inch.

A Draft of a tract of land situated
 in the Township of Donegal and
 County of Westmoreland,
 containing Forty nine
 acres, Seventy per-
 ches and allowance
 of six percent for
 roads, etc. surveyed
 for Richard A. Dass-

dorf the Eighth day of May 1902 it being part of a larger tract
 containing Three Hundred Forty six (346) acres, Eighty-eight
 (88) perches and allowance, originally surveyed in pursuance of a war-
 rant granted to Lawrence Winsheimer dated the second day of Oct-
 ober, 1859. To James W. Latta, Esq.,

W. H. Matthews,
 County Surveyor.

IN TESTIMONY that the above is a copy of the original remaining on file in
 the Department of Internal Affairs of Pennsylvania, made
 conformably to an Act of Assembly approved the 16th day of
 February 1833, I have hereunto set my hand and caused
 the Seal of said Department to be affixed at Harrisburg,
 this twelfth day of August, 1907.

Henry Howell
 Secretary of Internal Affairs.